

WHAT'S NEW WITH KIDS?

For October 2011

Nevada's Unemployed and Employed Teens

Unemployed Teens

From 2007, the start of the Great Recession, to 2010, Nevada's unemployment rate increased from 4.6 to 14.4 percent.* See Table 1. All major age groups experienced an increase in their respective group's unemployment rate. The youngest group of people, those 16 to 19 years of age, saw a 16.5 percentage point increase, from 16.3 percent to 32.8 percent, the largest increase among the all major age groups. In 2010, the teen unemployment rate was nearly twice the state rate.

**Table 1. Unemployed Nevadans by Age Group: 2007 - 2010
(annual averages)***

<i>Age Group</i>	<i>Unemployment Rate Percent</i>		<i>Percentage Point Change</i>
	<i>2007</i>	<i>2010</i>	
16 - 19	16.3	32.8	16.5
20 - 24	5.4	19.6	14.2
25 - 34	4.3	14.6	10.3
35 - 44	3.7	13.3	9.6
45 - 54	3.0	12.2	9.2
55 - 64	4.7	11.5	6.8
65 and over	5.4	12.4	7.0
Nevada overall rate	4.6	14.4	9.8

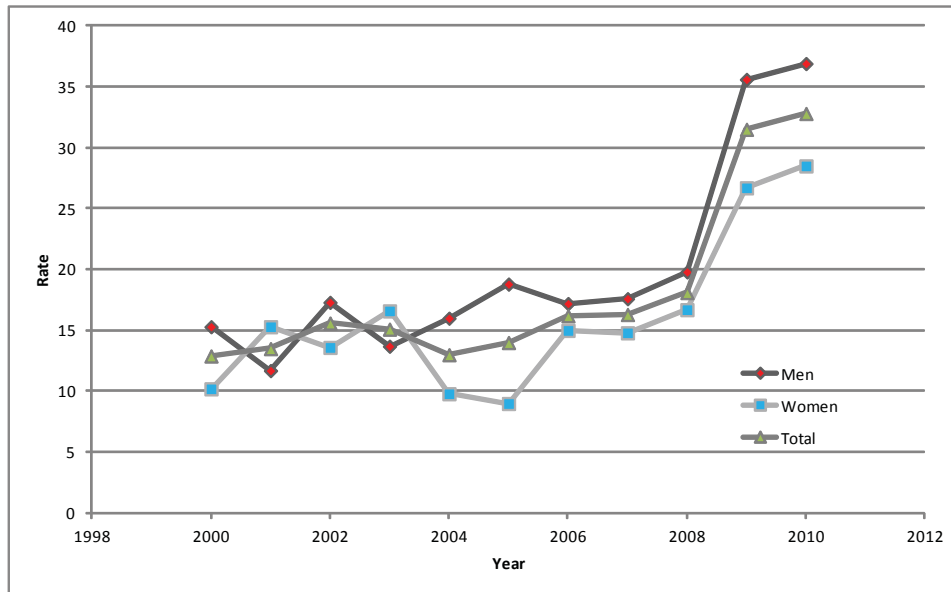
Note: For each age category, the unemployment rate represents the number of unemployed, but seeking jobs, persons in that category as a percent of the civilian labor force in that category. The teenage rates exclude those enrolled in school.

Source: Bureau of Labor Statistics, Annual Average Statewide Data, <http://www.bls.gov/lau/tables.htm>, as of 10/4/11.

*It declined to 13.4 percent in September of 2011 (Bureau of Labor Statistics, Local Area Unemployment Statistics, available at: <http://www.bls.gov/lau/>, as of 10/24/11).

Since 2000, the unemployment rate has been higher for teen males than for teen females in Nevada, with the exception of 2001 and 2003. See Figure 1. The 2010 rates are the highest in the decade for both teen males and females.

Figure 1. Unemployed Nevadans Ages 16 - 19 by Gender: 2000 - 2010 (annual averages)



Source: Bureau of Labor Statistics, Annual Average Statewide Data, <http://www.bls.gov/lau/tables.htm>, as of 10/4/11.

From 2007 to 2010, the unemployment rate increased by 19.3 and 13.7 percentage points for teen males and teen females, respectively. See Table 2.

Table 2. Unemployed Nevadans Ages 16 - 19 by Gender: 2007 - 2010 (annual averages)

<i>Gender</i>	<i>Unemployment Rate</i>		<i>Percentage Point Change</i>
	<i>2007</i>	<i>2010</i>	
Male	17.6	36.9	19.3
Female	14.8	28.5	13.7

Source: Bureau of Labor Statistics, Annual Average Statewide Data, <http://www.bls.gov/lau/tables.htm>, as of 10/4/11.

Employed Teens

Another way of looking at the employment status of teens is to consider the employment rate. Employment rate is defined as the number of age groups employed divided by the total number of people in that age group. From 2007 to 2010, Nevada's employment rate decreased from 65.6 percent to 56.1 percent. See Table 3. All major age groups, with the exception of 65 and over, experienced a decrease in the employment rate. Persons age 20 to 24 experienced the largest decline in their employment rate, followed by persons age 35 to 44, 25 to 34, and 16 to 19. Teens saw an 11.3 percentage point decline in their rate.

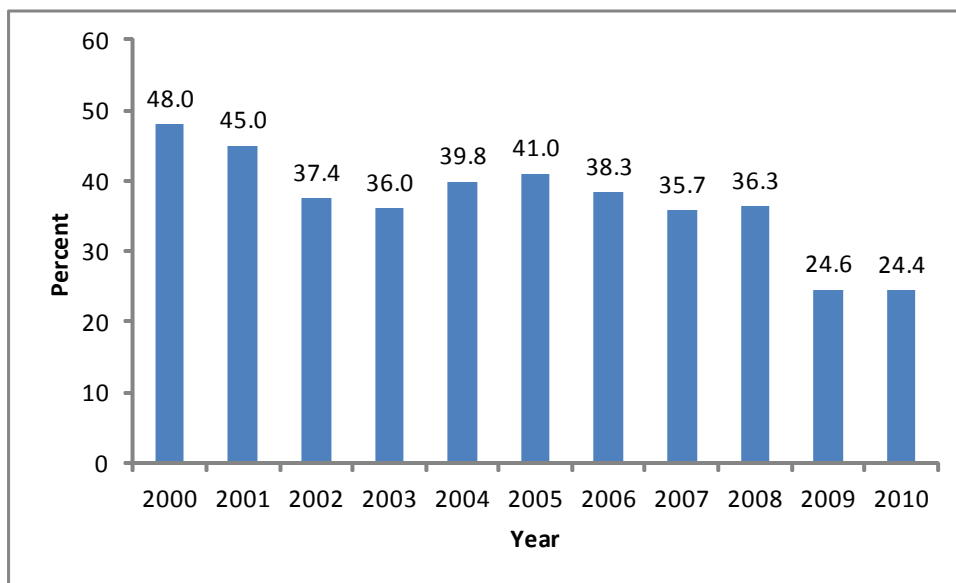
Table 3. Employed Nevadans by Age Group: 2007 - 2010

<i>Age Group</i>	<i>Percent Employed</i>		<i>Percentage Point Change</i>
	<i>2007</i>	<i>2010</i>	
16 - 19	35.7	24.4	-11.3
20 - 24	78.6	60.6	-18.0
25 - 34	81.0	69.5	-11.5
35 - 44	84.3	72.5	-11.8
45 - 54	81.0	70.6	-10.4
55 - 64	59.5	56.6	-2.9
65 and over	17.8	18.1	0.3
Nevada overall rate	65.6	56.1	-9.5

Source: Bureau of Labor Statistics, Annual Average Statewide Data, <http://www.bls.gov/lau/tables.htm>, as of 10/4/11.

For the teens ages 16 to 19, the employment rate for the entire decade is depicted below. The rate in 2010 was almost one-half that of the rate in 2000. It declined almost every year with the exception of 2004-2006 and 2008. A sharp drop occurred from 2008 to 2009. See Figure 3.

**Figure 3. Employment Rates for Nevadans Ages 16 - 19: 2000 to 2010
(annual averages in percent)**

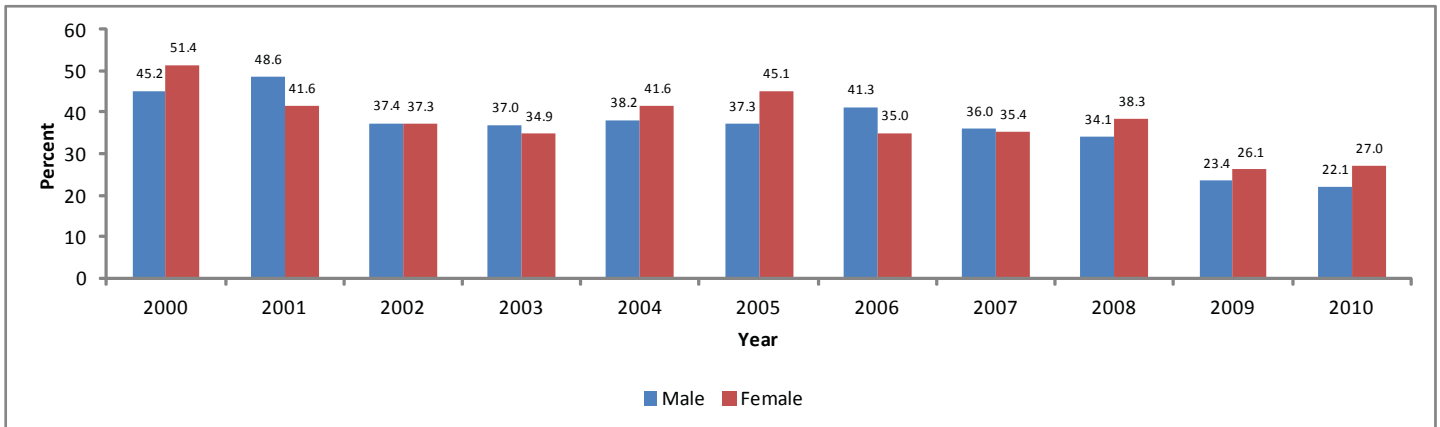


Note: 2006 are preliminary data.

Source: Bureau of Labor Statistics, Annual Average Statewide Data, <http://www.bls.gov/lau/tables.htm>, as of 10/4/11.

From 2000 to 2010, female teens were employed at a higher rate than male teens for the majority of the years. See Figure 4.

Figure 4. Employment Rates for Nevadans Ages 16 - 19 by Gender: 2000 to 2010 (annual averages in percent)



Note: 2006 are preliminary data.

Source: Bureau of Labor Statistics, Annual Average Statewide Data, <http://www.bls.gov/lau/tables.htm>, as of 10/4/11.

Conclusion

From 2007 to 2010, among seven major age groups, Nevadans ages 16 to 19 saw the largest percentage point increase in their unemployment rate. A possible explanation for the increase is that with higher unemployment rates for all major age groups, employers had available a broad pool of skilled, older workers from which to choose. The result was lower-skilled teens became less employable.

Definitions:

“Employed persons are all those who, during the survey reference week, (which is generally the week including the 12th day of the month), (a) did any work at all as paid employees; (b) worked in their own business, profession, or on their own farm; (c) worked 15 hours or more as unpaid workers in a family-operated enterprise; or (d) were temporarily absent from their jobs because of illness, vacation, labor dispute, or another reason. Unemployed persons are all persons who had no employment during the reference week, were available for work, except for temporary illness, and had made specific efforts to find employment sometime during the 4 weeks preceding the survey. Persons who were waiting to be recalled to a job from which they had been laid off need not have been looking for work to be classified as unemployed.”

“Civilian labor force comprises all persons classified as employed or unemployed.”

Source: Bureau of Labor Statistics, “Employment and Unemployment Among Youth Technical Note,” *Economic News Release*, <http://bls.gov/news.release/youth.tn.htm>, 10/7/11.

Rennae Daneshvary, PhD
Nevada KIDS COUNT Director