

WHAT'S NEW WITH KIDS?

November 2012

Children Not Attending Preschool

As I stated in an earlier *Newsletter*, I plan to write about each of the 16 indicators that comprise the Annie E. Casey Foundation's (AECF) new index that ranks states on child well-being.¹ In this *Newsletter*, I discuss percent of children not attending preschool, one of the four indicators of Education.

During 2008-2010, 71 percent of Nevada children ages 3 and 4 did not attend preschool.² Among the states, Nevada ranked 50th on this indicator. New Jersey ranked best (36 percent). The average rate for the nation was 53 percent, much better than Nevada's.

Between 2005-2007 and 2008-2010, the percent of Nevada children not attending preschool gradually decreased from 75 to 71, a 4 percentage point or a 5 percent decrease (Figure 1). The change represents a decrease of 2,000 children—from 56,000 to 54,000. Similarly, the average rate for the United States gradually decreased from 56 percent in 2005-2007 to 53 percent in 2008-2010—a 5 percent decrease (Figure 1).

Four of Nevada's neighboring states also show percentage decreases since 2005-2007 (Figure 2). Idaho and Oregon led with a 9 percent decrease, followed by California and Utah with 5 percent, Arizona's remained unchanged.

Figure 1. Percent of Children Ages 3 to 4 Not Attending Preschool, Nevada and the United States: 2005-2007 to 2008-2010

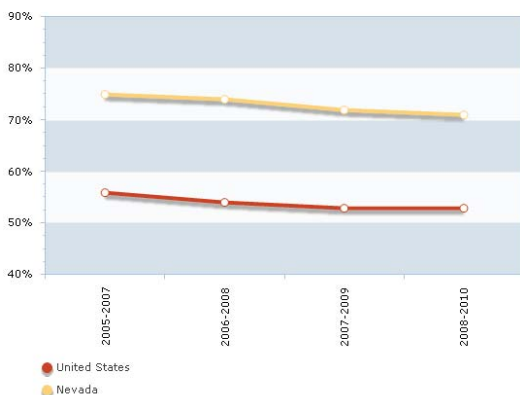
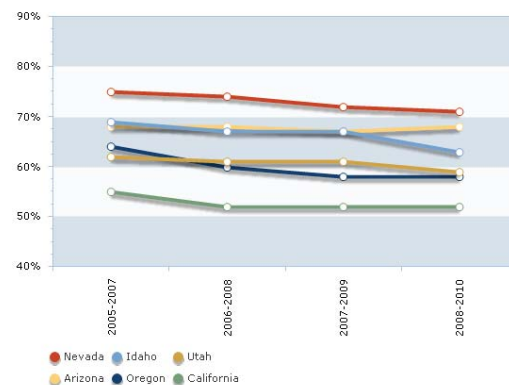


Figure 2. Percent of Children Ages 3 to 4 Not Attending Preschool, Nevada and Neighboring States: 2005-2007 to 2008-2010



Source: Population Reference Bureau, analysis of data from the U.S. Census Bureau, 2005-2007 to 2008-2010 American Community Survey, AECF KIDS COUNT Data Center, 9/28/12.

¹In the June *Newsletter*, I introduced you to the Annie E. Casey Foundation's (AECF) new index that ranks states on child well-being. The new index incorporates four domains that capture what children need most to thrive: (1) Economic Well-Being, (2) Education, (3) Health, and (4) Family and Community. Each of the four domains is comprised of four individual indicators for a total of 16.

²"The share of children ages 3 to 4 not enrolled in nursery school or preschool school during the previous two months." AECF KIDS COUNT Data Center, <http://datacenter.kidscount.org/>, 9/28/12.