

High School Dropout and Graduation Information

Nevada

The state-wide dropout rate in Nevada during 1999-2000 for grades 9-12 was 6.1 percent. Last year's rate was 7.8 percent. The graduation rate was 75.9 percent (high school, adjusted, and adult diploma count divided by total 12th-grade enrollment count).¹

Of the racial/ethnic categories, Hispanics had the highest percentage of high school dropouts in Nevada followed by American Indians/Alaskan Natives, blacks, whites, and Asians/Pacific Islanders. Additionally, 12th graders were more likely to leave school than students in grades 9 through 11; and, males were more likely to drop out than were females.²

The importance of improving Nevada's graduation rate is described by Jack McLaughlin, state superintendent of instruction: "The future demands a skilled work force. Completing a high school education is essential for the 21st century, not only for the worker's well-being, but also our state's economic progress."³

Counties

Among the 17 counties in Nevada, the percentage of students in grades 9 to 12 who dropped out of school during the 1999-2000 school year ranged from a low of 0 in Eureka County to a high of 15.8 in White Pine County.

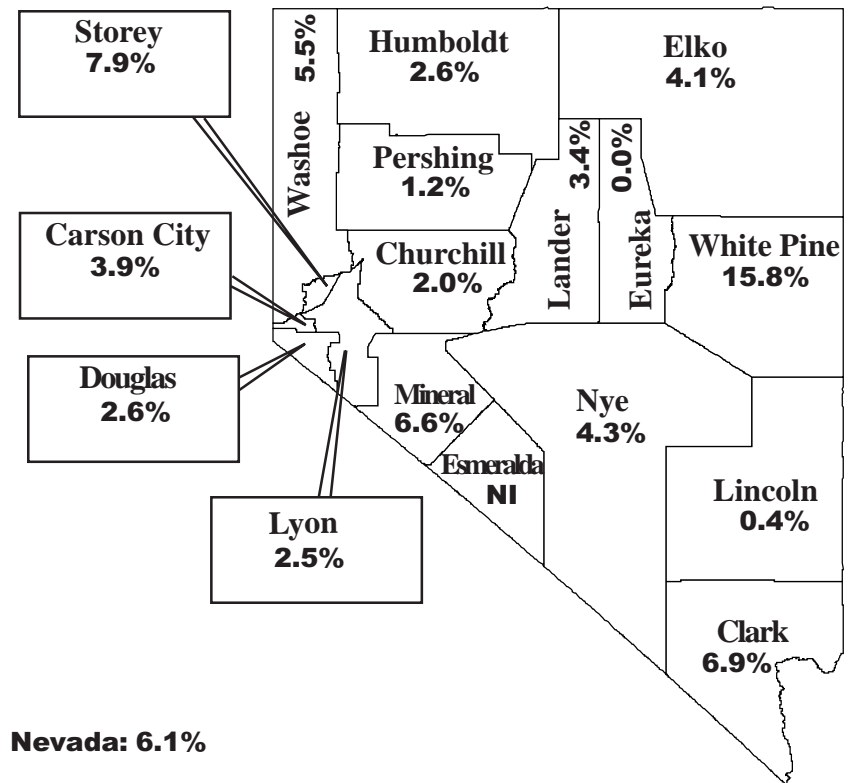
Significant Factors

- ❖ Based on the 1998 Current Population Survey, the Bureau of Labor Statistics reports that "students who finish high school are about twice as likely to be working or enrolled in college as are those who drop out."⁴

Definition

Dropouts are students who had withdrawn from school after the first day of fall enrollment, or who had completed the previous school year, but did not return for the start of the new school year.⁵

**Nevada Dropout Rate by County:
1999-2000**

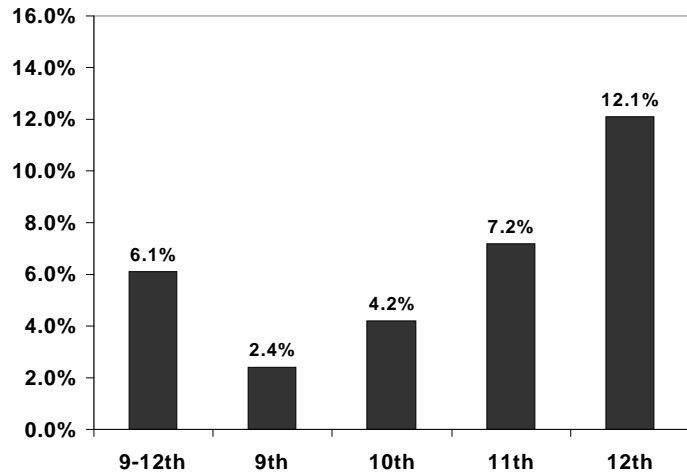


NI = No Instruction. Esmeralda County School District does not provide instruction in grades 9-12.

Source: Nevada Department of Education, 1999-2000.

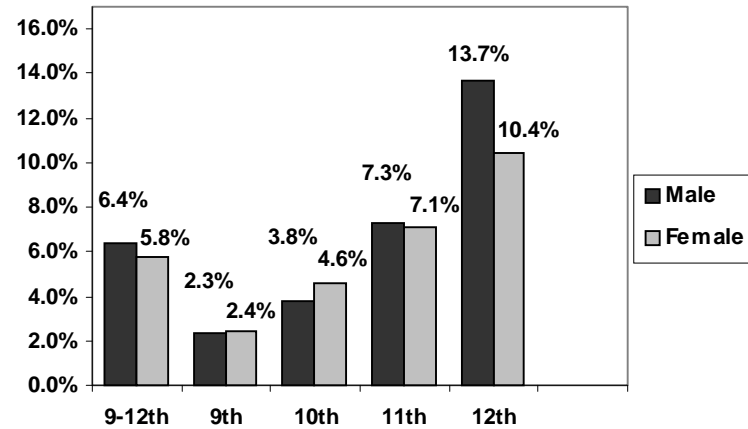
High School Dropout and Graduation Information Continued

Dropouts by Grade: 1999-2000



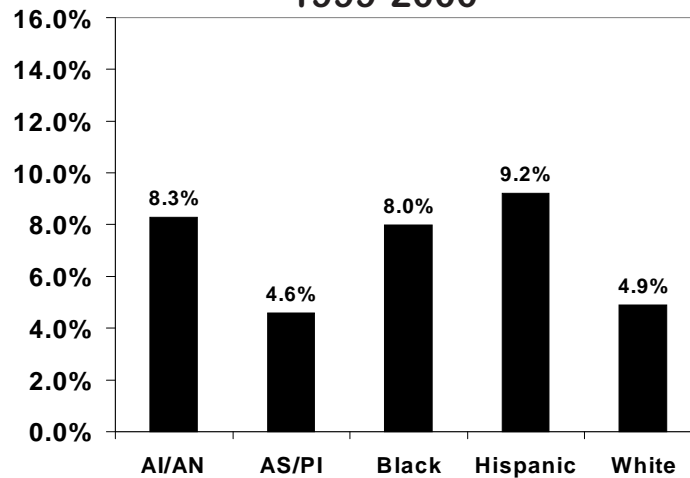
Source: Nevada Department of Education, 1999-2000.

Dropout Rates by Gender: 1999-2000



Source: Nevada Department of Education, 1999-2000.

Dropout Rates by Racial/Ethnic Category: 1999-2000



Source: Nevada Department of Education, 1999-2000.